

Connecting the Future through Smart Agriculture

# SMART FARM KOREA 2026

05.27 WED – 05.29 FRI

Changwon Exhibition  
Convention Center Hall 1,2



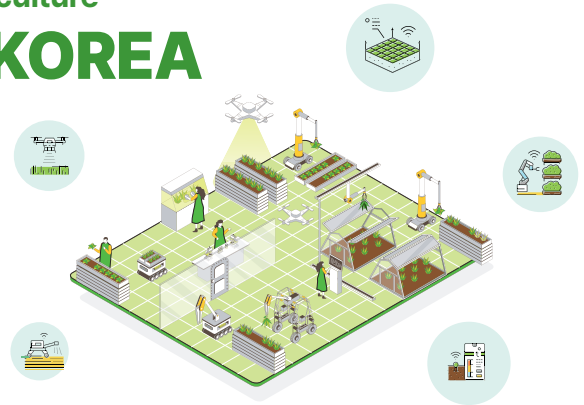


Connecting the Future through Smart Agriculture

# 2026 SMART FARM KOREA

As Korea's largest smart agriculture exhibition, the event drives sustainable future farming and serves as a comprehensive business platform covering the full smart agriculture value chain.

It also features buyer matchmaking, industry seminars, and global symposia, fostering cross-sector collaboration and presenting a forward-looking vision for smart farming innovation.



## Event Overview

<b>Event Name</b>	Smart Farm Korea
<b>Date</b>	May 27 (Wed) – 29 (Fri), 2026, 3 days
<b>Venue</b>	Changwon Exhibition Convention Center (CECO)
<b>Scale</b>	120 companies / 400 booths / Over 20,000 visitors

**Hosted by**



**Organized by**



**Supported by**

Ministry of Agriculture, Food and Rural Affairs (MAFRA), Rural Development Administration (RDA), Korea Smart Farm Industry Association, Smart Farm Research and Development Project Group, Korea Association For Livestock Housing & Environment machinery, Korea Federation of SMEs, BNK Kyongnam Bank, NH Nonghyup Bank

## Main Programs

### Global Exhibition

A professional smart agriculture exhibition featuring 120 companies and 400 booths from Korea and abroad

### Business Meeting

Customized export consultation sessions designed to help Korean companies expand into overseas markets.

## Exhibit Items

### Future Agriculture (Automation Systems)



Integrated growth-environment control systems, facility control environments, crop-growth data analysis systems, growth-environment management software, environmental monitoring solutions, automated and remote environment control, automated control solutions, manufacturing process and component management systems, cloud security solutions, production traceability systems, BT (Biotechnology), ET (Environmental Technology), advanced cultivation technologies, smart grids, smart sensors, ICT convergence technologies (digitalization, virtual farming, online direct sales), AI models for agriculture, IoT, big data, bio- and AgriTech solutions, and data-driven farm management platforms (FMS)

### Smart Factory Facilities & Equipment



Farm automation machinery, materials, and components, automated farm systems, conveyors; fully automated production lines, plant factories, smart greenhouses, smart orchards, indoor/outdoor environmental control equipment, facility-specific and integrated control systems (sensors, switches, PLCs, etc.), agricultural robots and drones, imaging equipment (CCTV, infrared cameras, lenses, DVRs), lighting equipment (smart LED and light-source control systems), and smart logistics and packaging solutions (AGVs, automated sorters).

### Urban Agriculture



Functional home gardens, home garden supplies, garden and landscaping supplies, hobby agriculture, weekend farms, home plant and vegetable growers, home cultivation systems, home horticultural products, small indoor garden units, hydroponic cultivation systems, vertical greening products, urban-rural linkage programs, and indoor plant decoration products

### Return-to-Farming / Rural Lifestyle



Consulting on return to farming and rural areas/complexes/support, agricultural employment/start-up items and consulting, ICT education, rural experience learning, rural tourism, landscaping, start-up education, smart farm field training, gardening kit for learning, teaching materials, agricultural and rural informatization education.

### Agricultural Machinery and Materials



Agricultural and livestock machinery, agricultural equipment and tools, cultivation machinery, harvesting machinery, protected horticultural systems, greenhouse materials, horticultural, vegetable and fruit production supplies, seeds, seedlings and seedlings, fertilizers, pesticides and nutrients, special crops and forestry equipment, livestock, dairy, pig and poultry production equipment.

### Agricultural Products & Food



Processed agricultural products, specialty agricultural products, agricultural foods, agricultural and seafood products, dairy product, fermented foods, eco-friendly and organic foods and products, sixth-industry foods, functional foods, and traditional foods.

### Education & Training



Processed agricultural products, specialty agricultural products, agricultural foods, agricultural and seafood products, dairy product, fermented foods, eco-friendly and organic foods and products, sixth-industry foods, functional foods, and traditional foods.

### Livestock Industry



Livestock ICT, bioenergy and manure treatment systems, veterinary pharmaceuticals, bioenergy solutions, intelligent swine and poultry management systems, animal diagnostics and disease management solutions, smart livestock housing platforms, feed mixers, estrus detectors, sow feeders, drinking-water management systems, pig sorters, weight measurement devices, milking machines, milk-flow sensors, milk composition analyzers, and liquid feeding systems.

## Side Event

### International symposium

- Trends and policies in next
- generation smart agriculture technologies

### Seminar

Exchange and sharing of the latest smart farming technologies

### Export Business Matching Program

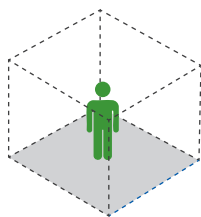
1:1 business matching sessions between overseas buyers and participating companies

## Exhibitor Application Guide

### Independent Booth (Raw Space)

**\$2,000**

(per booth, VAT excluded)

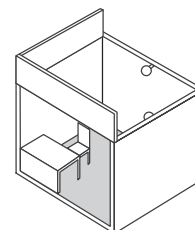


- Space only (3m × 3m) • Minimum of 2 booths required
- booth construction and dismantling by exhibitor
- Booth design must be approved by the Secretariat before installation.
- Electricity not included; separate application required

### Standard Booth(Shell Scheme)

**\$2,300**

(per booth, VAT excluded)



- **Installation cost included** • Size: 3m × 3m × 2.5m(h)
- Information desk and folding chairs • Fascia board • Pytex flooring
- One outlet, 1 kW • Lighting (3 spotlights, and fluorescent lamps)

## Additional Facilities Application Guide

Category		Cost (VAT included)	Notes
Electricity	Daytime use (9:00~18:00)	\$ 50 / kW	<ul style="list-style-type: none"> <li>• Apply per kW for additional power requirements</li> <li>• Independent booths are not provided with basic electricity and must apply separately</li> <li>• The fee covers installation and usage during the exhibition period, with no additional charge required</li> </ul>
	24-hour use	\$ 60 / kW	
Telephone	Domestic	\$ 50 / line	
Internet(LAN)		\$ 150 / Port	
Water Supply & Compressed Air		\$ 170 / unit	

## Participation Procedure

Application & Document Submission	<b>Method 1</b> Apply via the official website ( <a href="http://www.sfkorea.kr">www.sfkorea.kr</a> ) The Secretariat will confirm receipt within 3 days. After confirmation, submit the completed Exhibitor Application Form (Contract)
	<b>Method 2</b> Email Submission → For email applications, please send your application to <a href="mailto:sfkorea@jm-fair.com">sfkorea@jm-fair.com</a> and call the Secretariat at +82-051-782-1943 to confirm your submission Required Documents: Exhibitor Application Form, Business Registration Certificate
Application Receipt	Application is considered complete upon submission of the application form
Booth Fee Payment	Bank : <b>Shinhan Bank</b>   Account No : <b>110-545-992428</b>   Account Holder : <b>Eunjeong Park (BNC)</b> <b>Payment Deadline: April 30, 2026 (Thu)</b> → The payment must be made under the same company name as stated in the application form.
Booth Allocation	Booth locations will be assigned on a first-come, first served basis according to the order of contract submission. (Assignments may also vary depending on exhibit items, booth size, and product category.)

\* Note : Cancellation without prior notice after submission will result in a penalty fee.

## Key Schedule

Schedule	Period
Application Deadline	Until booth space is sold out
Booth Construction	May 25–26, 2026 (2 days)
Move-in (Exhibit Installation)	May 26, 2026 (1 day)
Exhibition Period	May 27–29, 2026 (3 days)
Move-out (Exhibit Removal & Dismantling)	May 29, 2026 (same day dismantling)



E-mail. [sfkorea@jm-fair.com](mailto:sfkorea@jm-fair.com) Tel. +82-51-746-1942